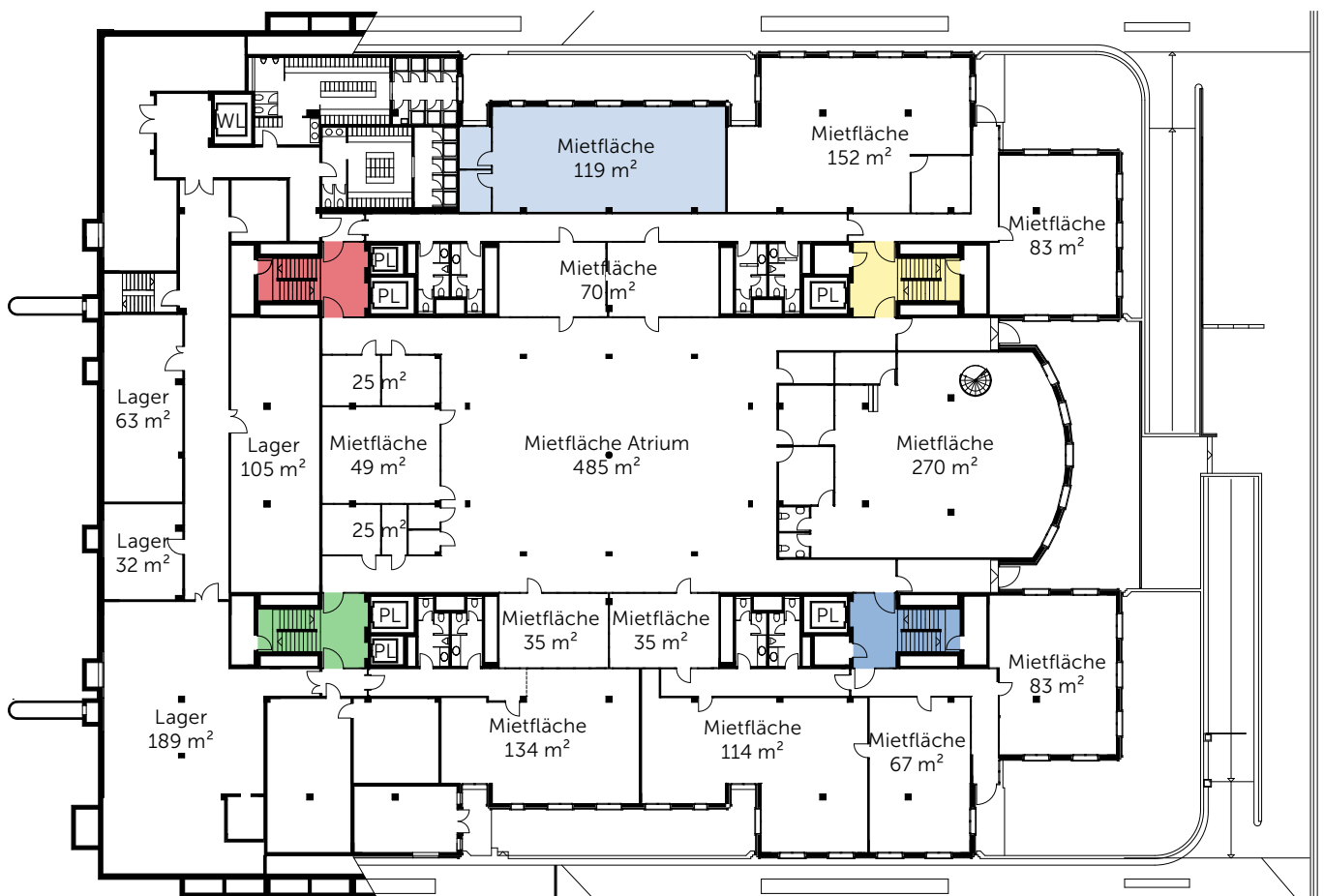


GRUNDRISS U1.11

| Etage | Etagenflächen | Mietfläche | Lagerflächen | Preis |
|--------|---------------------|--------------------|--------------------|---|
| Atrium | 2531 m ² | 119 m ² | 460 m ² | CHF 170 / m ² p. a. CHF 90 / m ² p. a. |



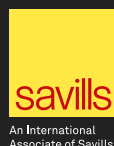
Liegenschaft

Lerzenstrasse 10, CH-8953 Dietikon

1:500



REAL ESTATE AG



H&B Real Estate AG
Lagerstrasse 107
8004 Zürich

T +41 44 250 52 52
plaza@hbre.ch